



Design # _____

DELUXE DESIGN PACKAGE FAX FORM - PRINT AND FAX TO (866) 509-4029

Please use only Blue or Black Ink. Required fields denoted with asterisk (*)

* Order Confirmation Number: _____

* Name: _____ *Cell Phone: _____

* Home Phone: _____ * Work Phone: _____ * Fax: _____

* Email Address: _____

(We will not send you anything that does not directly relate to your design)

* Address: _____ *City: _____ *State: _____ * Zip: _____

* How did you find out about us? (Please circle your answer)

Web Search Online Advertisement Billboard Bus Stop Sign Postcard in mail
 Newspaper Referred by a Friend Radio Ad Sign on a Bus Other _____
(please specify)

* Which room are you looking to remodel? (Please circle your answer)

Kitchen Bathroom Laundry Office Garage Other _____
(please specify)

*Cabinets:

Style: (Please circle your answer)

Beverly Light Oak Walkington Light Oak Vermont Honey Spice Bristol White
 Shaker Honey Spice Maple Heritage Chocolate Glaze Cambridge White Westport Cinnamon

Desired Wall Cabinet Height: 30" / 42"

Desired Extras: (Please circle the items below you desire)

Glass Door Cabinets Base Lazy Susan Desk Knee Drawer Crown Molding
 Roll-out trays Island Wall End Shelf Microwave Cabinet
 Lattice Wall Wall China Display Base End Shelf Toe Kick

*Room Detail:

Ceiling Height: _____

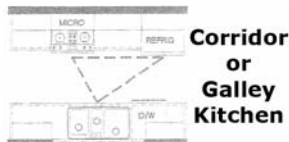
Soffit: Yes / No If yes, height: _____ depth: _____

* Appliances: (Please remember to indicate the location of your appliance hook-ups in your drawing)

Please list the dimensions of your appliances (W x D x H).
 (You should always confirm the measurements with the manufacturers' specifications.)

Refrigerator: _____ Dishwasher: _____
 Microwave Oven: _____ Stove / Range: _____
 Cook Top: _____ Sink: _____

* Kitchen Description: (e.g. Straight, Galley, U-shaped , L-shaped)



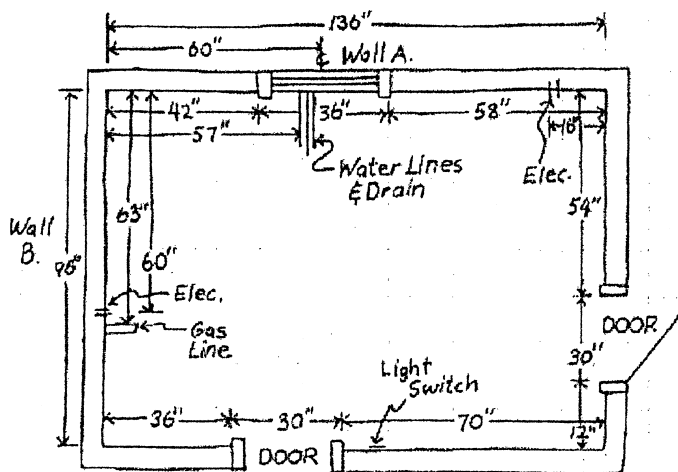
HOW TO MEASURE YOUR KITCHEN

Customers are responsible for providing accurate measurements of their kitchens. We recommend that your installer measure for you before you place your order.

FLOOR PLAN

Before any planning can start you must know the exact dimensions available to work with. Using the measuring procedure illustrated, carefully prepare a simple floor plan of your existing kitchen.

Your completed floor plan should resemble the diagram shown below. Make sure you show exact locations of doors, windows, hood vents, exhaust, gas line, water line, drains, switches' outlets, light fixtures, and heat vents. Double check all measurements.



EXAMPLE DOOR PLAN

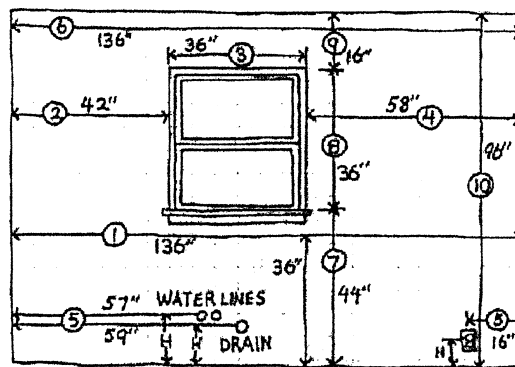
Measuring Procedure

Using a tape measure and graph paper, measure as outlined below.

Horizontal Measurement

- 1) Measure from wall to wall at 36" height.
- 2) Measure from corner to window or door opening.

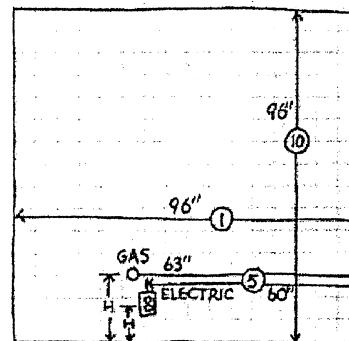
- 3) Measure across opening from trim edge to trim edge.
- 4) Measure from edge of trim to far wall. Compare sum of #2, #3 and #4 measurements to step #1.
- 5) Mark exact location of water, drain, gas lines and electrical outlets and switches on drawing.
- 6) Measure from wall to wall above window and compare



WALL A

Vertical Measurement

- 7) Measure from floor to window sill
- 8) Measure from window sill to top of window
- 9) Measure from top of window to ceiling.
- 10) Measure from floor to ceiling - Compare to sum of #7, #8 and #9



WALL B

Appliances vary in size. Make sure you have left enough room for new or existing appliances to fit. Some large side by side refrigerators need additional room for slide out drawers and shelves. Check with your appliance supplier to confirm opening size requirements.

